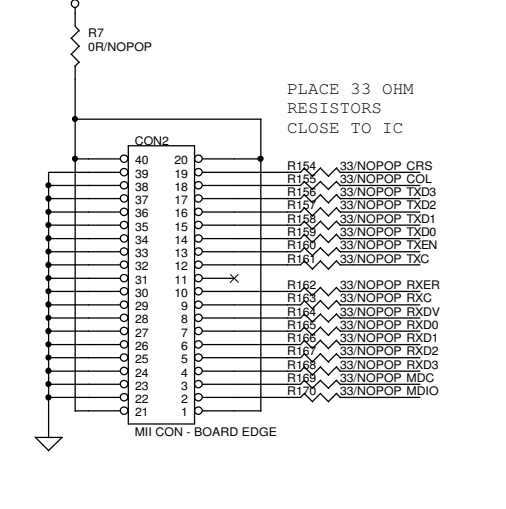
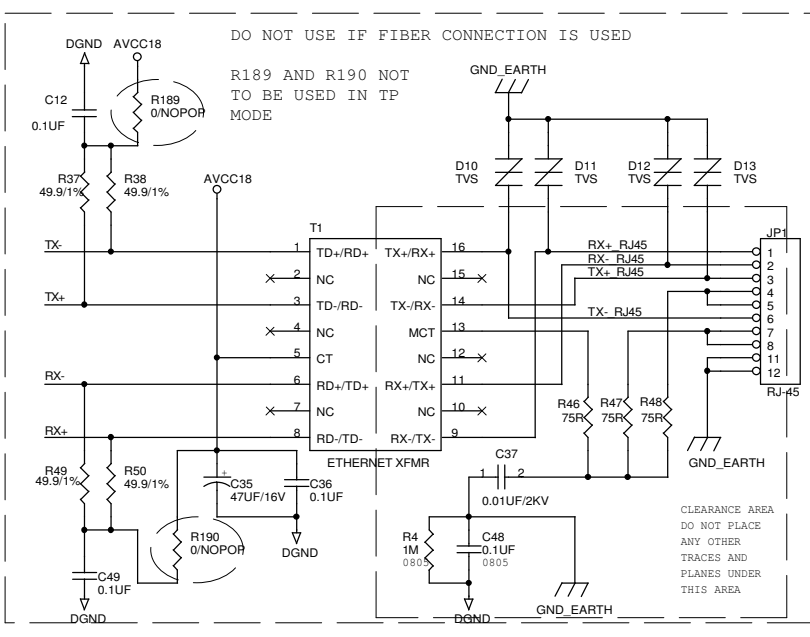
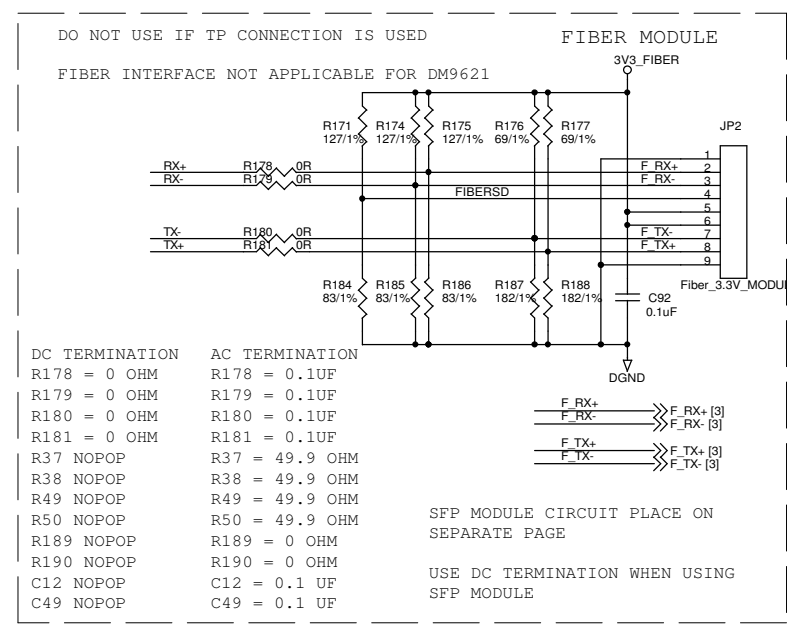
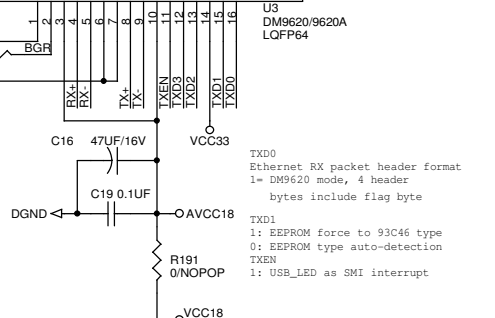
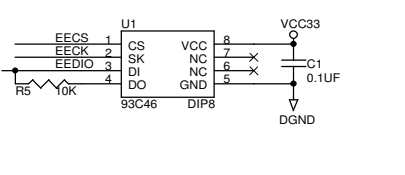
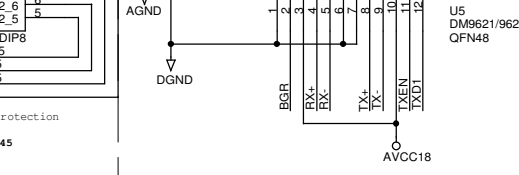
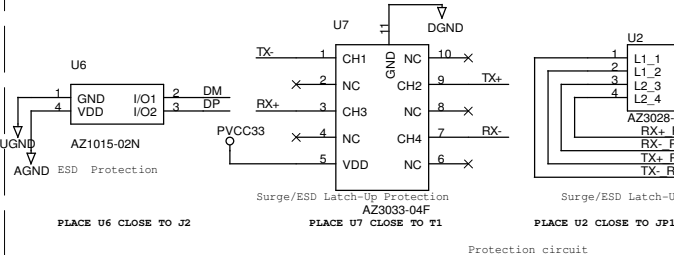
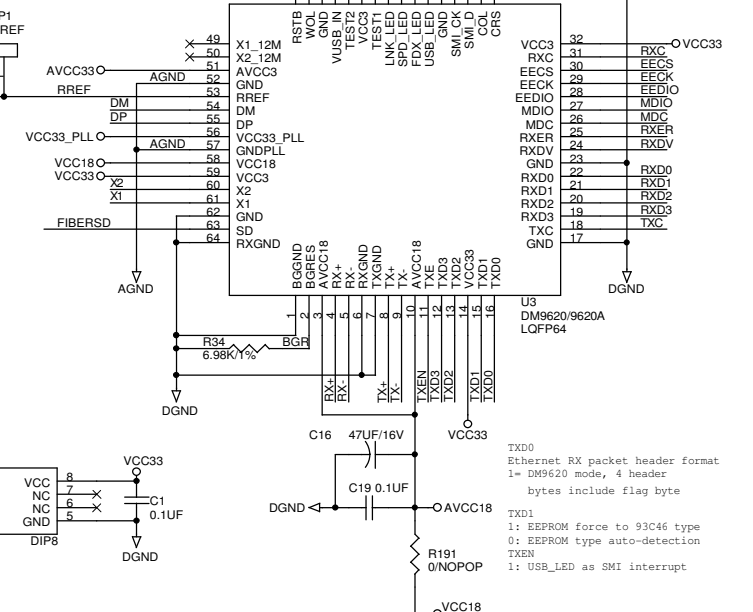
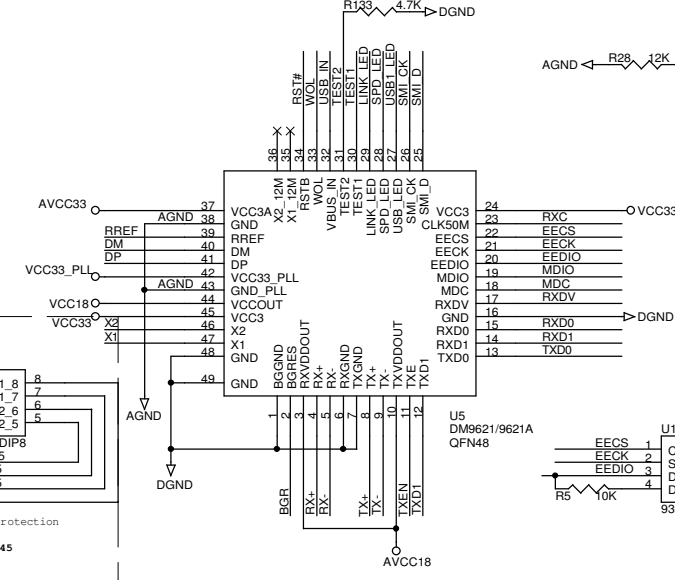
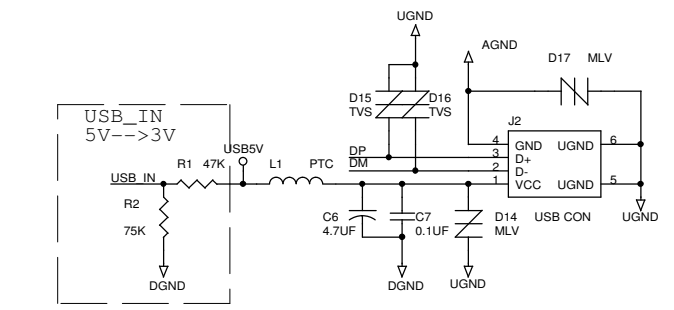
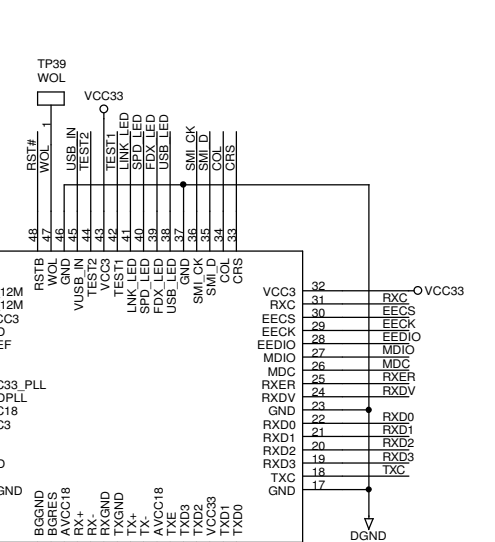
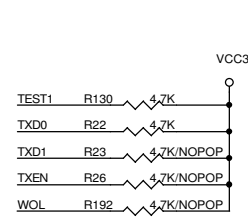
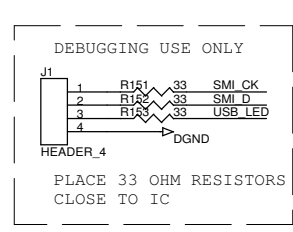
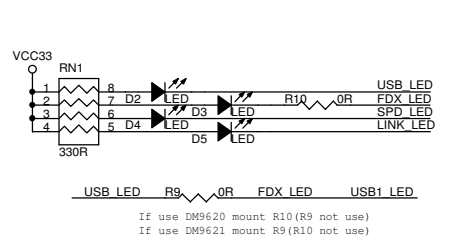
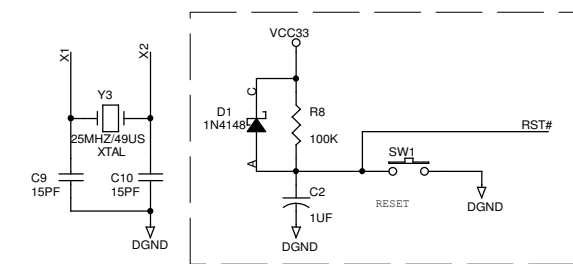
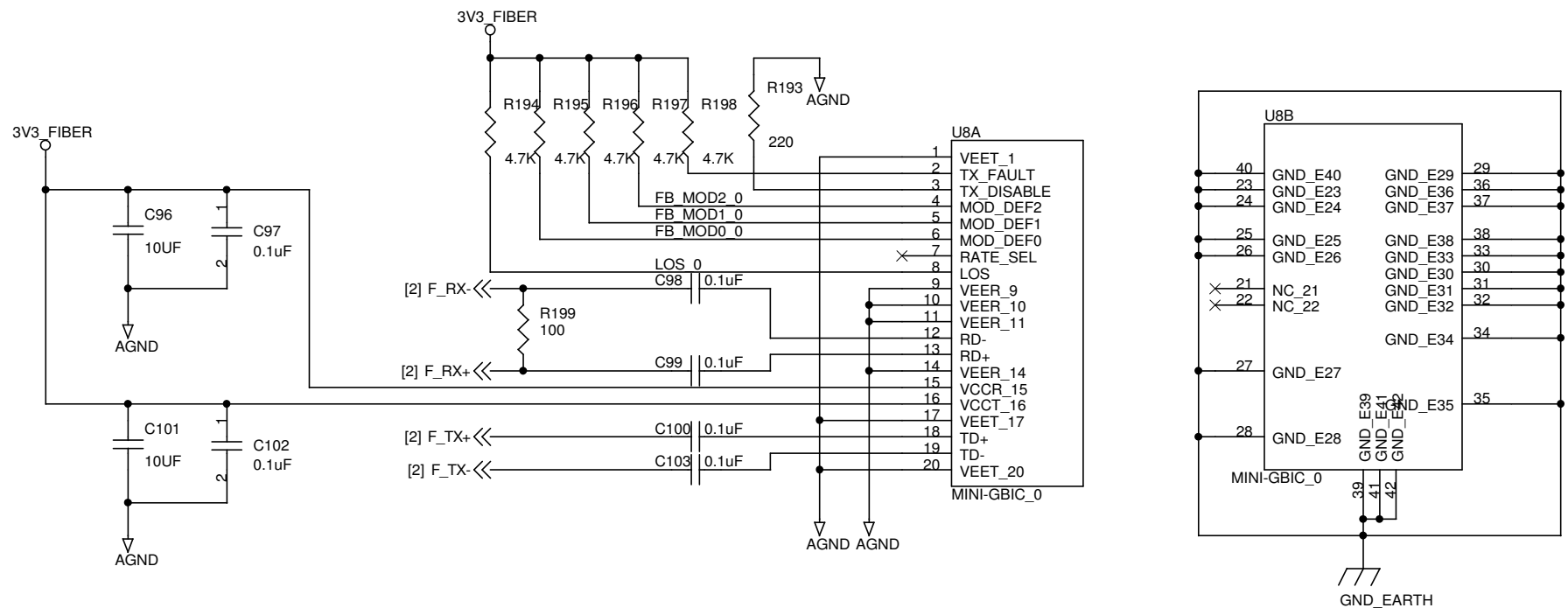


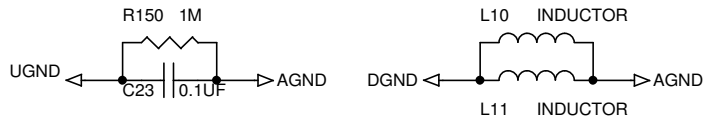
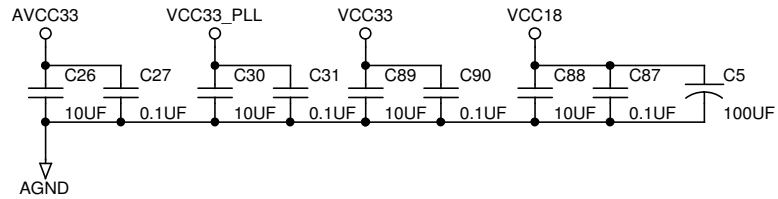
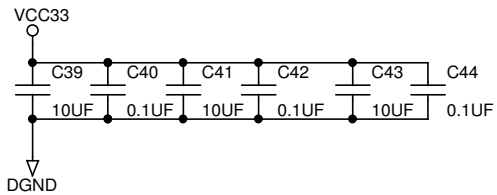
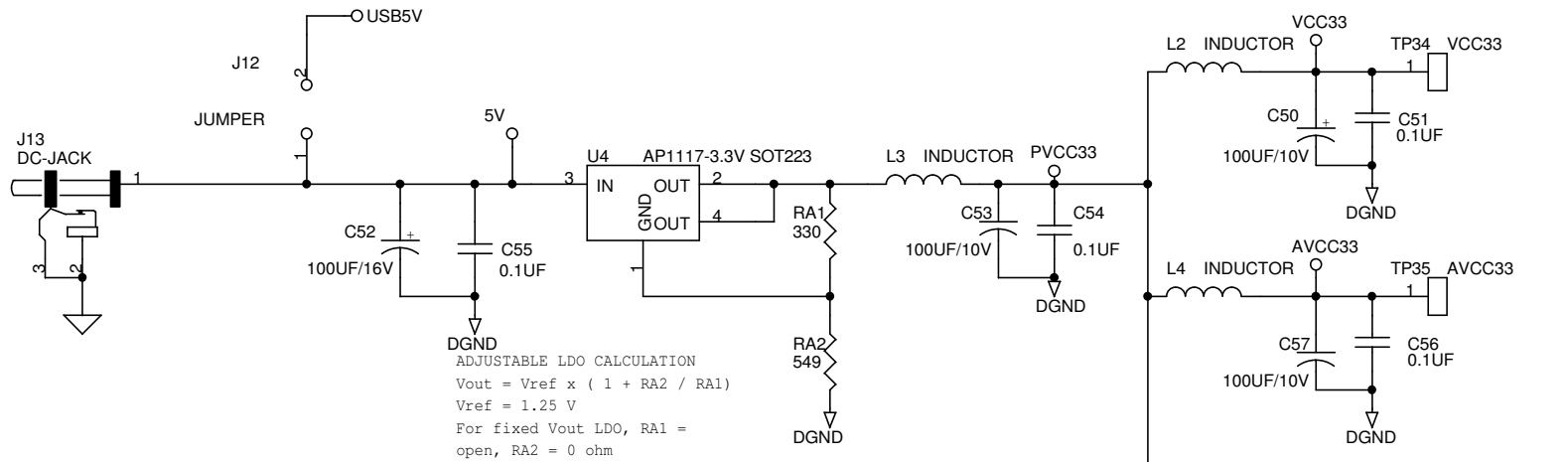
<b>DAVICOM Semiconductor, Inc.</b>		
Title		
USB2.0 TO ETHERNET		
Size	Document Number	Rev
A4	BLOCK	1.4
Date:	Wednesday, April 16, 2014	Sheet 1 of 5



<b>DAVICOM Semiconductor, Inc.</b>		
Title USB2.0 TO ETHERNET		
Size A3	Document Number DM9620 MAIN CHIP	Rev 1.4
Date: Wednesday, April 16, 2014	Sheet 2	of 5



EXAMPLE SFP MODULE:  
 Apac Opto LM38-A3S-TC-N  
 1310nm, MULTIMODE,  
 125Mbps Fast Ethernet



<b>DAVICOM Semiconductor, Inc.</b>		
Title		
USB2.0 TO ETHERNET		
Size	Document Number	Rev
A4	POWER	1.4
Date:	Wednesday, April 16, 2014	Sheet 4 of 5

VER	DATE	ENGINEER	NOTE
1.0	04/28/2009	MARCO FAN	NEW CIRCUIT DM9620+DM9621
1.01	04/28/2009	WILLIE NIOU	6.8K to 6.98K UPDATE
1.1	10/22/2010	MARCO FAN	1. USB5V_IN: C6 DIP 100UF--->SMD 4.7UF 2. RESET RC: SMD 10K --->1K, DIP 10UF--->SMD 4.7UF 3. AVCC18:C16 DIP 100UF--->47UF 4. DM9620 PIN 1,6,7,62,64 CONN DGND--->AGND 5. USB CONN PART OF 5V--->4V, DGND--->AGND
1.2	03/11/2011	WILLIE NIOU	1. ADD FIBER CIRCIT 2. ADD FIBER MODULE VOLTAGE FILTER
1.3	03/16/2012	WILLIE NIOU	1. DO NOT USE MDIX WHEN IN FIBER MODE PHY REG[0X00]=0X2100 PHY REG[0X10]=0X4014 PHY REG[0X14]=0X0010 2. WOL ADD PULL-UP SELECTION FOR DM9621A/20A
1.31	09/11/2012	WILLIE NIOU	R8 CHANGE FROM 4.7K TO 100K
1.4	10/17/2012	Alliang	Add USB & Ethernet port ESD and Surge protection Device.
	04/16/2014	WILLIE NIOU	Add SFP circuit

<b>DAVICOM Semiconductor, Inc.</b>			
Title		USB2.0 TO ETHERNET	
Size	Document Number	Rev	
A4	HISTORY	1.4	
Date:	Wednesday, April 16, 2014	Sheet	5 of 5